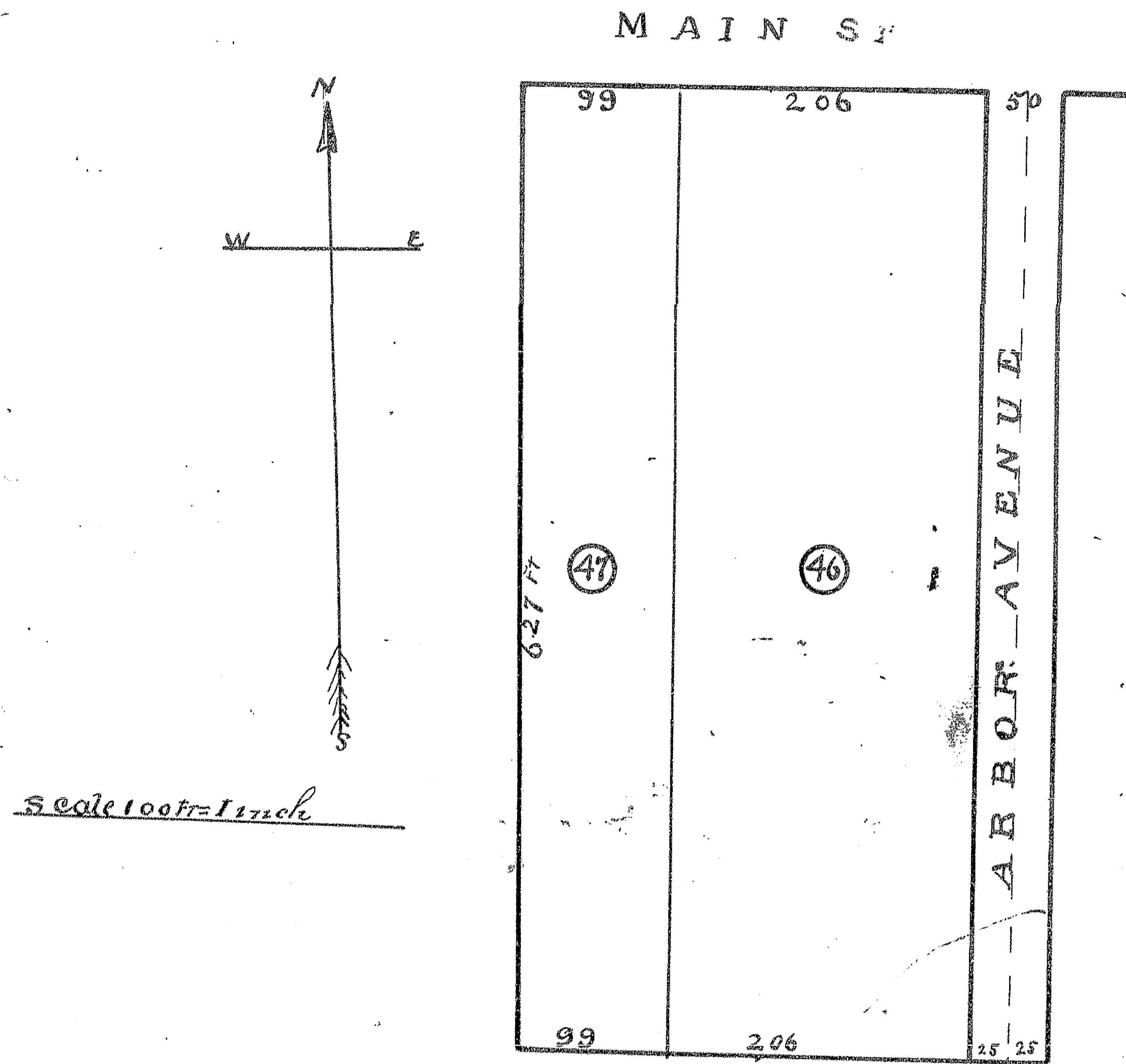


REVENUE PLAT 1904

A SUBDIVISION OF SUB LOT 31
OF RESUBDIVISION 1898 OF THE NORTH HALF
OF SECTION 16 T. 11 N. R. 1 E. KNOX CO ILL.



STATE OF ILLINOIS, }
Knox County, } ss.

I, C. S. RICHEY, County Surveyor of said Knox County, do hereby certify that the foregoing and annexed is a true and correct Plat and description of Lands advertised for Survey and Platting by the County Clerk, as taken from the records of Knox County, and by measurements and survey, as provided for in Sections 62 and 63, Chapter 120, Revised Statutes of Illinois, 1903.

Dated this 29th day of March, 1904.

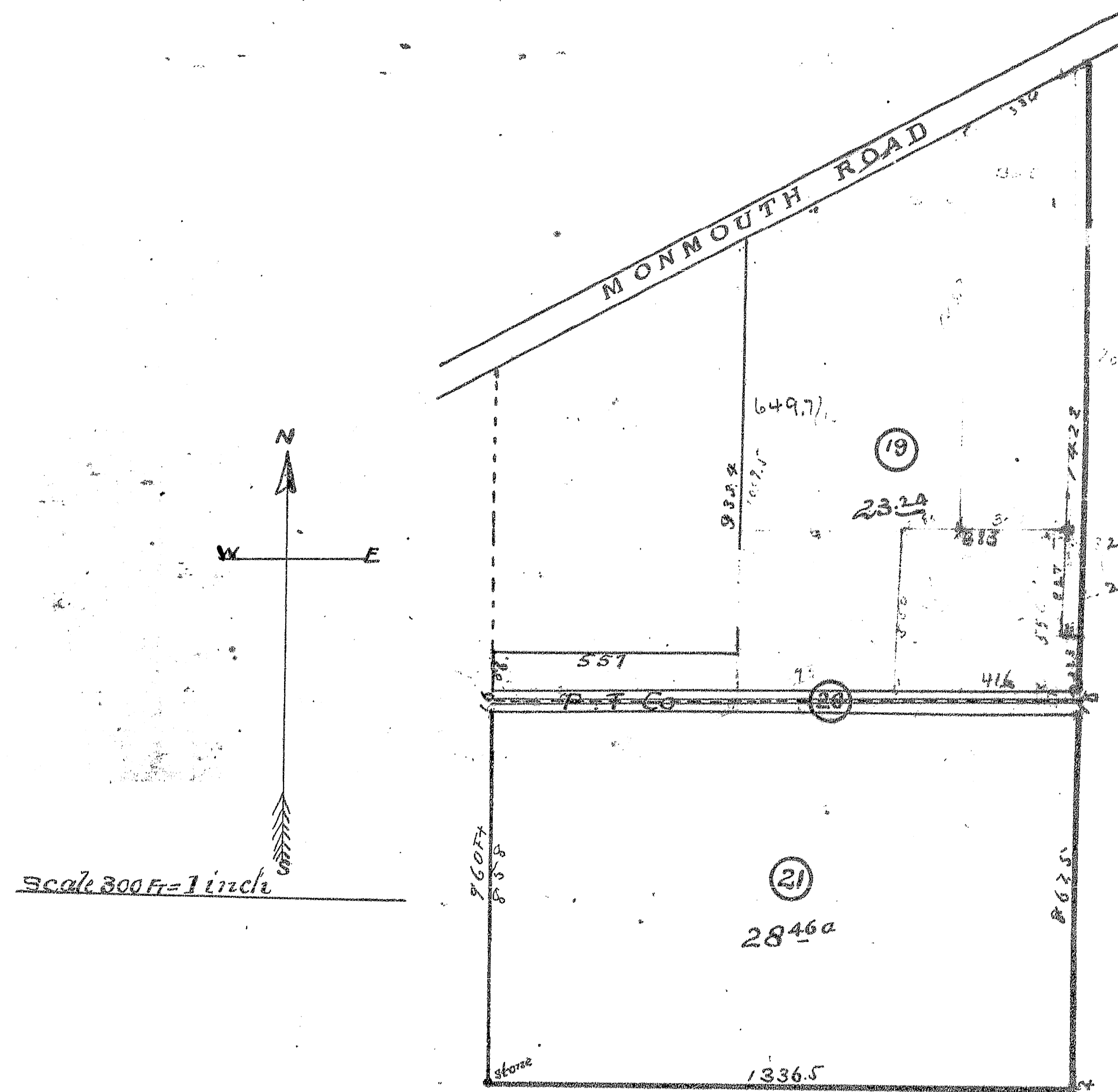
Approved by me, this 29th day of March, 1904.

C. S. RICHEY, County Surveyor.

FRANK L. ADAMS, County Clerk.

REVENUE PLAT 1904

A SUBDIVISION OF ^{SUB} LOT 13 OF SUBDIVISION 1899
OF THE SE 1/4 OF SECTION 16 T. 11 N. R. 1 E. COMPRISING
LOTS 1, 2, 3, 5, 6 & 7 OF SUBDIVISION OF FITCH ESTATE



STATE OF ILLINOIS, }
Knox County, } ss.

I, C. S. RICHEY, County Surveyor of said Knox County, do hereby certify that the foregoing and annexed is a true and correct Plat and description of Lands advertised for Survey and Platting by the County Clerk, as taken from the records of Knox County, and by measurements and survey, as provided for in Sections 62 and 63, Chapter 120, Revised Statutes of Illinois, 1903.

Dated this 29th day of March, 1904.

Approved by me, this 29th day of March, 1904.

C. S. RICHEY, County Surveyor.

FRANK L. ADAMS, County Clerk.